

3 Bedroom 9M X 3M

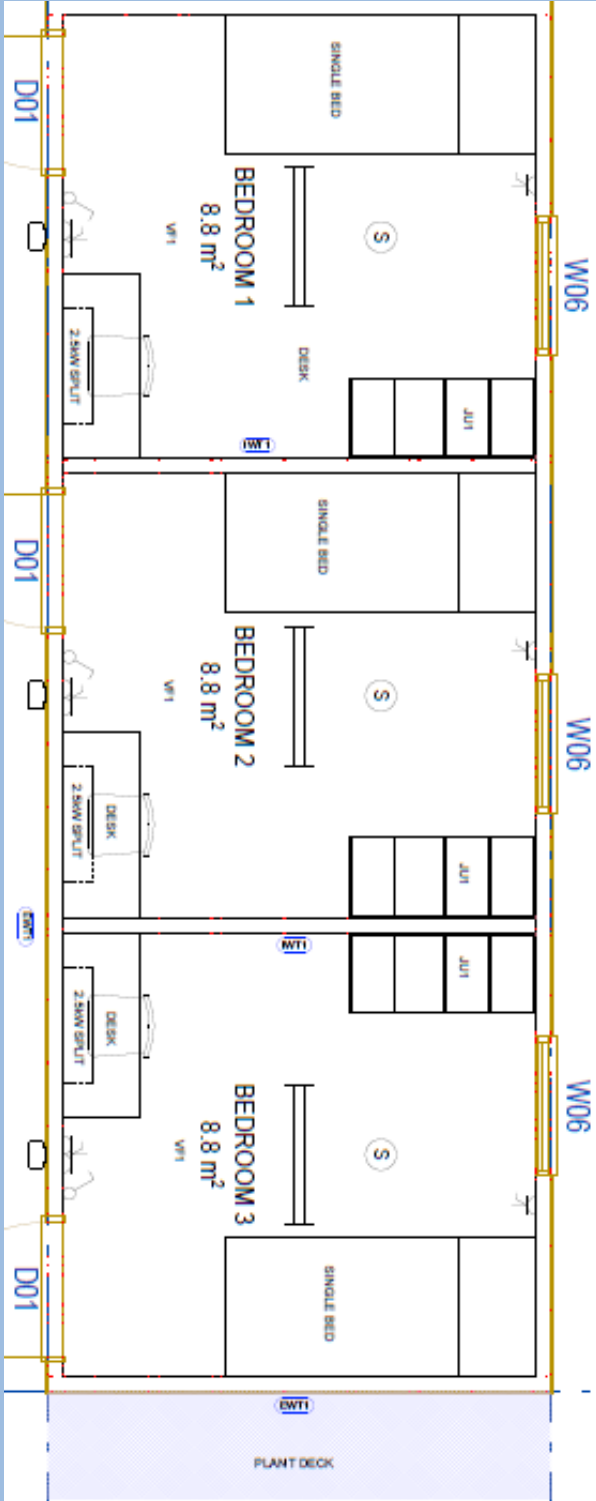
STARTING FROM:
\$83,000* ex. gst

This popular 9m x 3m modular building is purpose-built for workers accommodation, especially suited to mining camps and remote job sites. It features three private bedrooms, each equipped with a wardrobe, office desk, and chair – offering a comfortable space for rest and productivity. Designed for use in areas with communal bathroom and toilet facilities, this modular is built with durable steel framing and provides a practical, efficient accommodation solution.

FEATURES:

- ✓ 3x Private bedrooms
- ✓ Fully air-conditioned
- ✓ Wardrobe & Office Desk / Chair
- ✓ Quality Steel Frames
- ✓ Class 3, C2 cyclone rated

**Any upgrades will be subject to additional charges. Such additional costs will be outlined in a separate written agreement and are not included in the starting price.*



ACC3BR-9-3